



Home Controller Touch Panels Presentation





We offer exclusive smart home experience for your living spaces with unique products and features based on design and technology.



Technology

We are constantly working to provide innovative solutions in every product we develop. Innovation will appear in different forms in each of our products. Sometimes as a different sensor technology, sometimes by using a new production technique, sometimes by offering a different user experience.



Design

We believe in the power of simplicity in design, and we work hard to create minimalist, beautiful, and intuitive products for your smart home. You can see the perfection in the details and the originality in the design in all of our Core products.



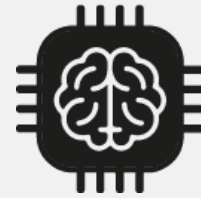
Craftsmanship

We carry out all electronic manufacturing, mechanical manufacturing, assembly, and quality control processes with our skilled personnel and state-of-the-art machinery in-house.



All in ONE

Core Home Controller Touch Panels work as server of KNX Systems, Remote Controller Gateway, IoT Gateway and SIP Intercom Client. Like all other Core products, they are pure combination of design and innovation with different aspects. They have two different models to be blended with different living spaces.



Server of Knx Smart Home



Remote Controller



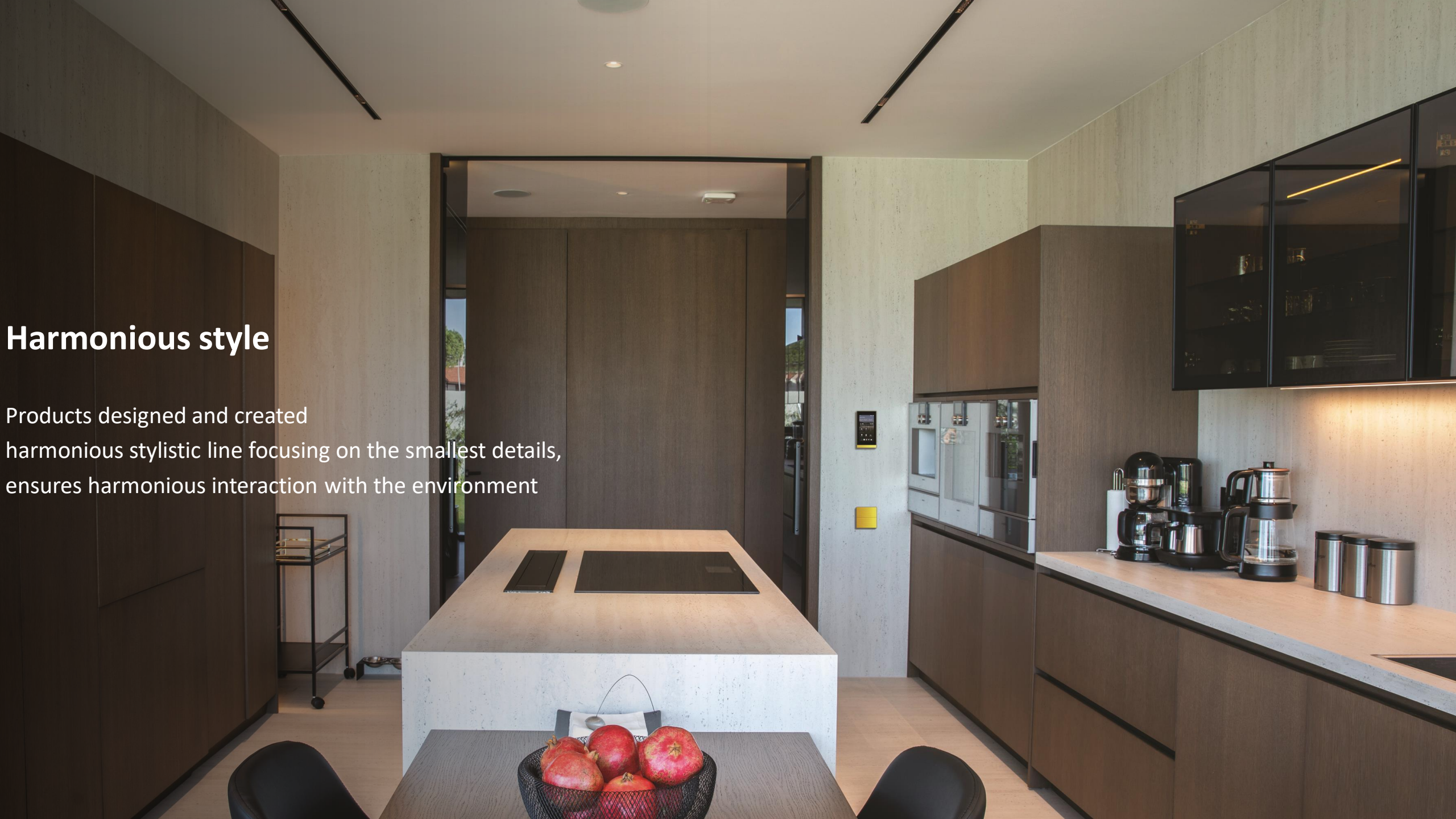
Intercom Client



True Gateway to IoT World

Harmonious style

Products designed and created
harmonious stylistic line focusing on the smallest details,
ensures harmonious interaction with the environment



Premium Finish Options

Brushed Finishes

Pure form of stainless steel, brass and aluminum are brushed with perfect craftsmanship to provide satin effect in each touch to the device.



Brass

Stainless
Steel

Aluminum
Grey

Aluminum
Black

Silky-Matte Finishes

Aluminum is painted with unique colors and coated with special techniques to provide silky feeling in each touch to the product.



Sand Beige

Cocoa Grey

Verdant

Obsidian
Black

Titanium Grey

Glacier White

Eclipse

Home Controller Touch Panels





Full HD Display

10" and 5" Eclipse 2.0 touch panels boast a full HD resolution, delivering stunning clarity and vibrant colors that bring images and content to life with unparalleled detail.



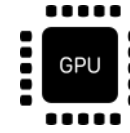


Eclipse 5" Brass



Groundbreaking Performance

Experience the pinnacle of technological innovation with the new generation chipset and Android 12 integration within cutting-edge devices. This powerful combination redefines the standards of performance, efficiency, and user experience.



Rockchip RK3566 CPU



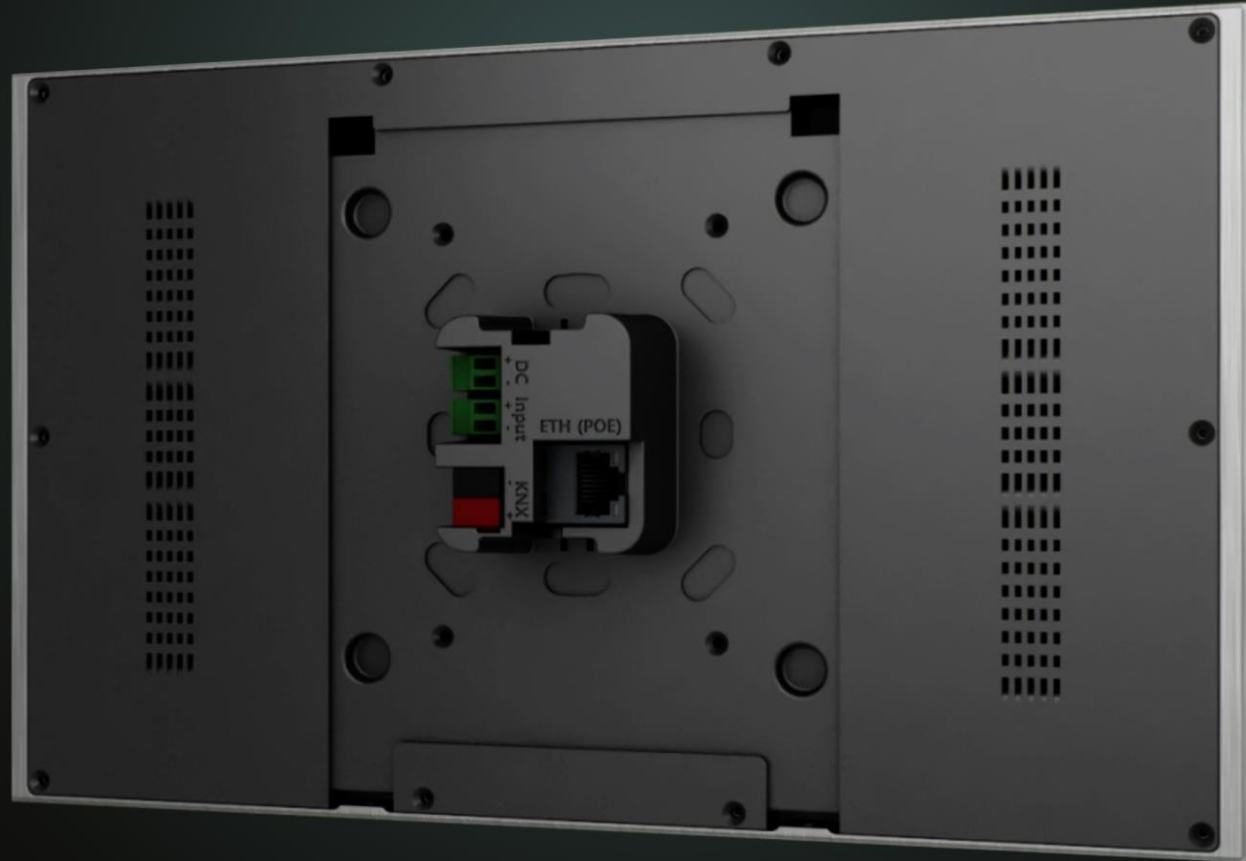
2 GB RAM



Android 12

Surface Mounting Installation

Eclipse 2.0 Touch Panels are designed to fit into European standard single gang inwall box which makes installation simpler and sustainable in time.



Built-in Sensors

Equipping a device with built-in sensors for temperature, humidity, proximity, and ambient light adds a layer of intelligence and adaptability to its functionalities. This sensor suite enhances user experience and allows for a more responsive and context-aware interaction with the device.



Humidity
Sensor



Temperature
Sensor



Proximity
Sensor





Eclipse 10.1" Stainless Steel



Eclipse 5" Brass



Eclipse 2 - 10"



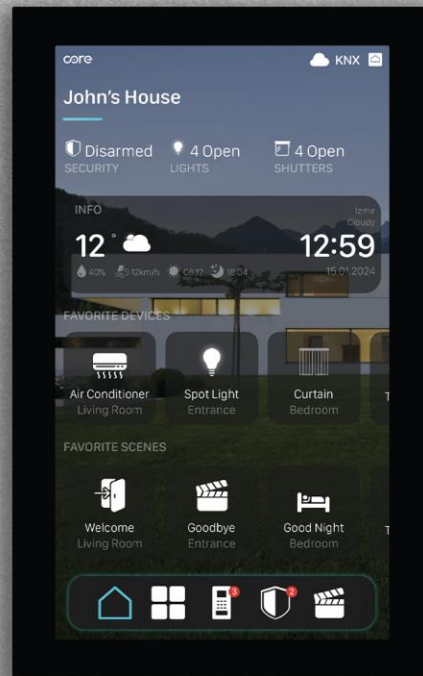
Eclipse 2 - 5"



CPU	1.8 GHz Quad Core ARM Cortex-A55 CPU / Rockchip RK3566 Chipset	1.8 GHz Quad Core ARM Cortex-A55 CPU / Rockchip RK3566 Chipset
Memory	2GB	2GB
Hard Disk	8GB EMMC	8GB EMMC
Operating System	Android 12	Android 12
Power	12-30VDC & PoE	12-30VDC & PoE
Screen size	10.1"	5"
Resolution	1920px x 1200px	720px X 1280px
Microphone	Microphone array	Microphone array
Speaker	2 x 4 Ohm - 2 Watts	1 x 4 Ohm - 2 Watts
Input	1 Digital Inputs	1 Digital Inputs
Output	x	x
KNX Bus Connection	KNX-TP	KNX-TP
RS-485	x	x
RS-232	x	x
LAN	1	1
Wi-Fi	No	No
Dual Network Connectivity	No	No
Sensors	Temperature, Humidity, Proximity, Ambient Light	Temperature, Humidity, Proximity, Ambient Light
Operating System	CoreOS 4.0	CoreOS 4.0
Virtual Temperature	Yes	Yes
Installation	Surface Mounting with 2M Inwall Box	Surface Mounting with 2M Inwall Box

Surface

Home Controller Touch Panels





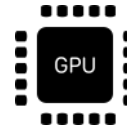
Sleek Design

10'' and 8'' Surface Touch Panels with a slim design combines sleek aesthetics with intuitive touch functionality, providing a modern and space-efficient solution for a variety of applications.



Performance

Integrating Rockchip PX30, a high-speed processor with an Android 8.1 platform for a smart home touch panel creates a powerful and versatile device, capable of delivering a seamless and responsive user experience.



Rockchip PX30
CPU



2 GB RAM

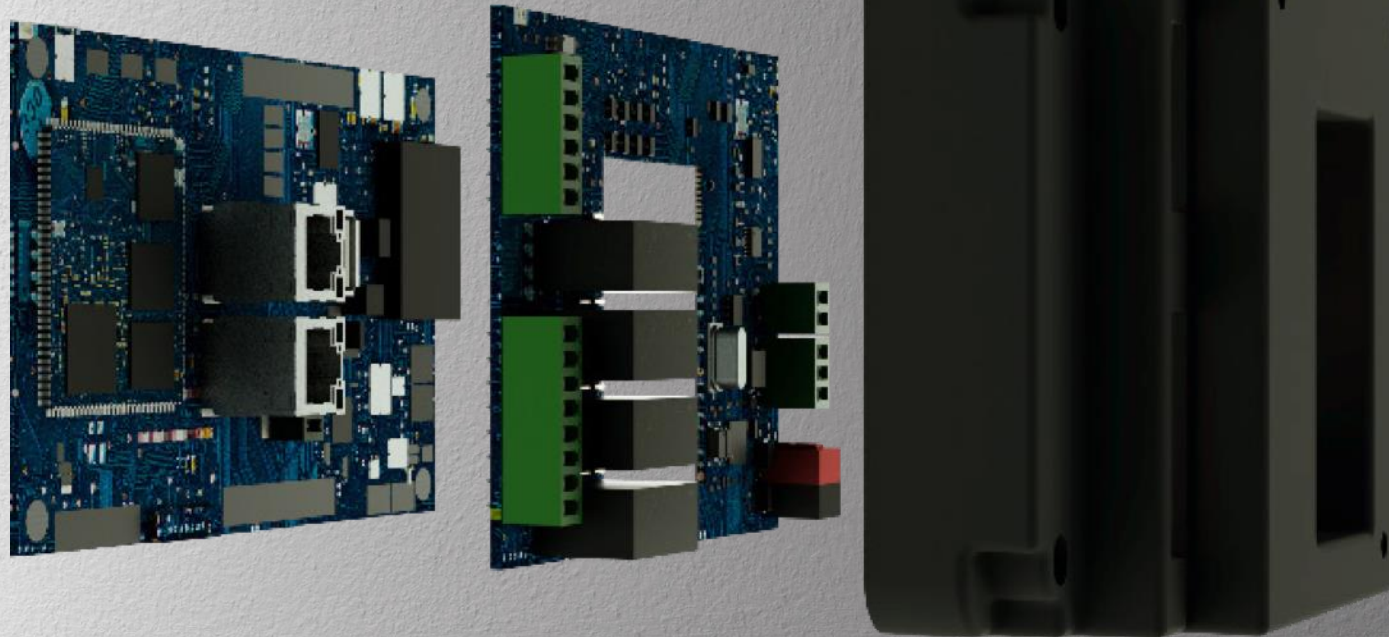


Android 8.1

Dual Network

Surface 1.1 Touch Panels have the capability to operate on two separate networks simultaneously such as building network and home network





Built-in I/O's

Surface 1.1 Touch Panels allow for seamless connectivity with external peripherals and devices with built-in 5 inputs and 4 outputs.

Built-in Sensors

Equipping a device with built-in sensors for temperature, humidity, proximity, and ambient light adds a layer of intelligence and adaptability to its functionalities. This sensor suite enhances user experience and allows for a more responsive and context-aware interaction with the device.



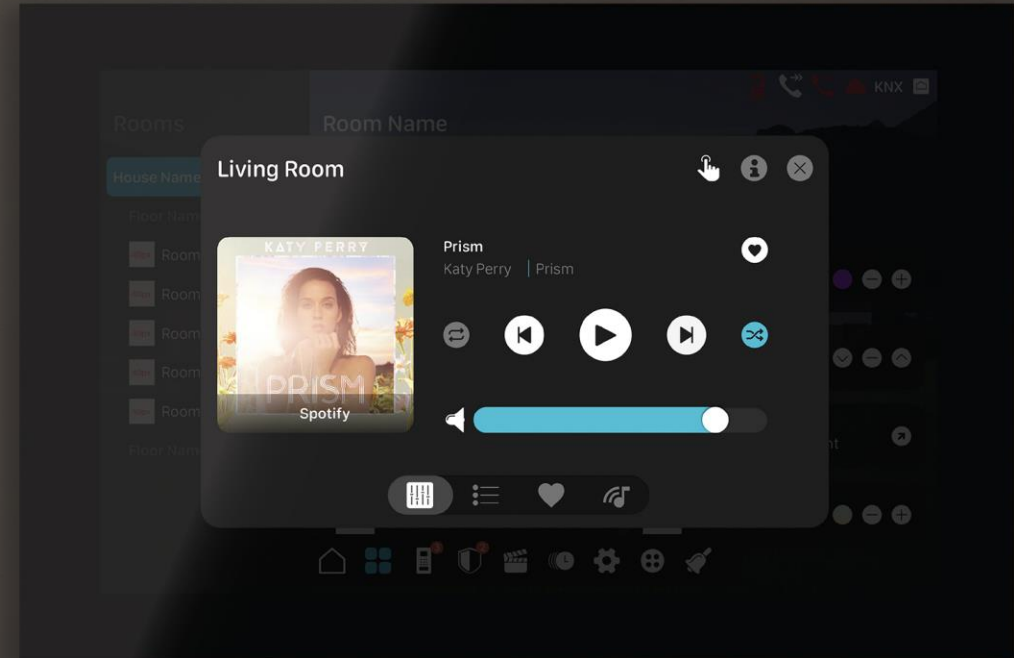
Humidity
Sensor

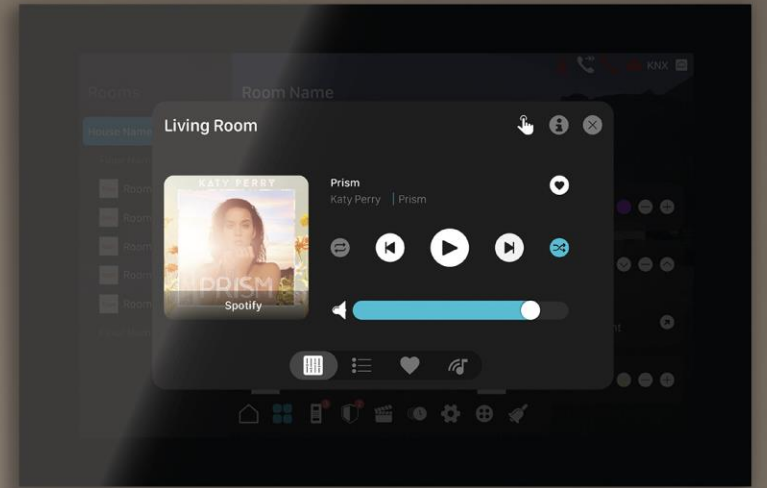


Temperature
Sensor



Proximity
Sensor





Surface 10.1" Obsidian Black

Surface 1.1 - 10"



Surface 1.1 8"



CPU	Quad Core ARM Cortex - A35 CPU @1.3GHz / Rockchip PX30 Chipset	Quad Core ARM Cortex - A35 CPU @1.3GHz / Rockchip PX30 Chipset
Memory	2GB	2GB
Hard Disk	8GB EMMC	8GB EMMC
Operating System	Android 8.1	Android 8.1
Power	12-30VDC	12-30VDC
Screen size	10.1"	8"
Resolution	1280px x 800px	800px X 1280px
Microphone	1 with Echo Cancellation	1 with Echo Cancellation
Speaker	2 x 8 Ohm - 2 Watts	2 x 8 Ohm - 2 Watts
Input	5 Digital Inputs	5 Digital Inputs
Output	4 x 8A Latching Relay	4 x 8A Latching Relay
KNX Bus Connection	KNX-TP	KNX-TP
RS-485	1	1
RS-232	1	1
LAN	2	2
Wi-Fi	No	No
Dual Network Connectivity	Yes	Yes
Sensors	Temperature, Humidity, Proximity, Ambient Light	Temperature, Humidity, Proximity, Ambient Light
Operating System	CoreOS 4.0	CoreOS 4.0
Virtual Temperature	Yes	Yes
Installation	Flush-mounting with Eclipse Inwall Box	Flush-mounting with Eclipse Inwall Box



Home Controller
Touch Panels

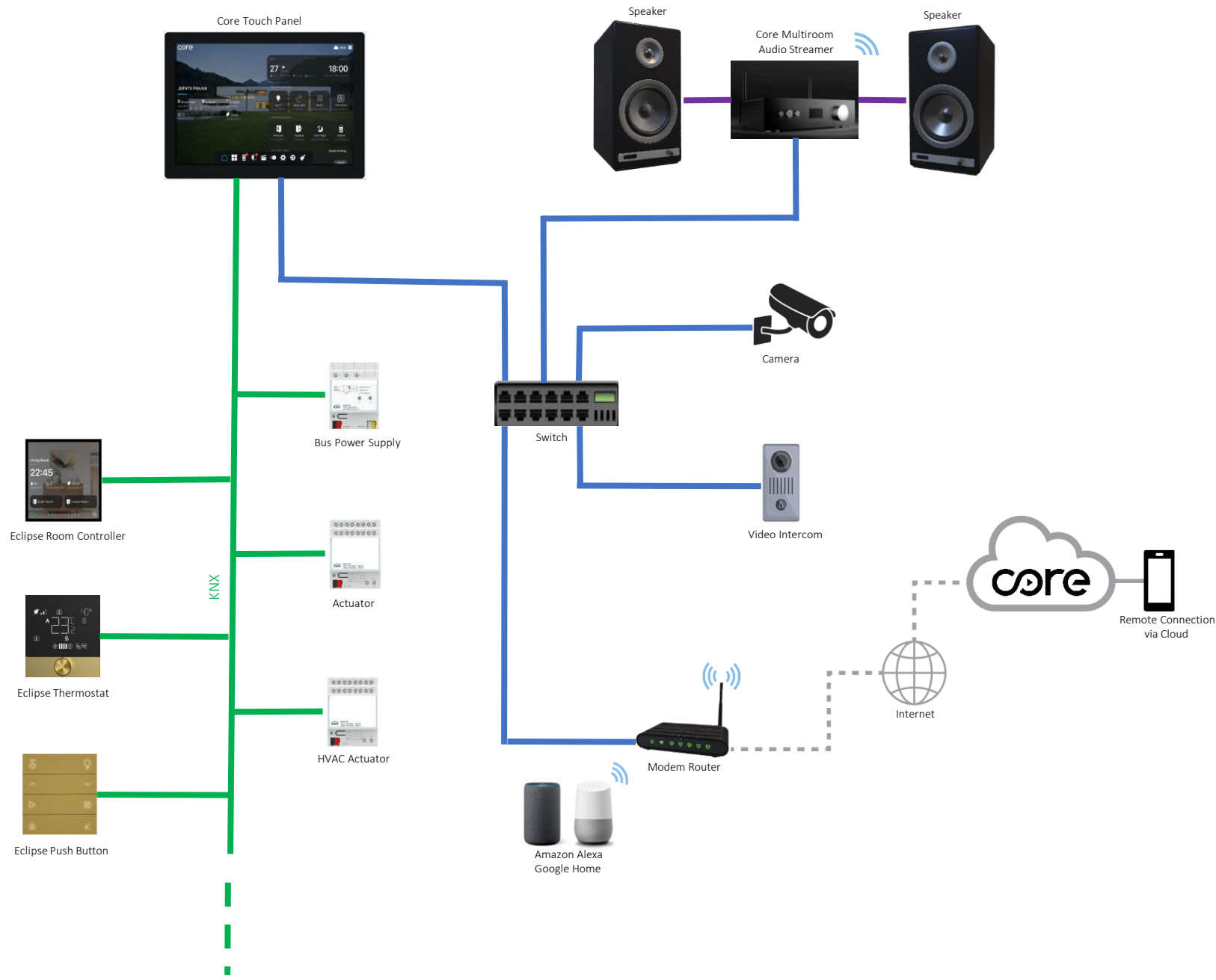
THE SYSTEM

CoreOS 4.0 comes with extensive UI Design updates keeping with powerful functionalities of CoreOS 3.0. New UI enhances end user experience with summary sections, detailed automation page, shortcut control buttons and so...

System Structure

Core Touch Panels connect directly to the KNX system and the building's LAN network, through which it can be managed via a mobile app.

Through the LAN network it is possible to interact with devices that do not operate directly on KNX standards, as long as they are compatible with the communication protocols integrated in the server.





IoT Devices



Integrated I/O

Server of KNX System

Core Home Controller Touch Panels work as the server of KNX Systems, so KNX System can be controlled and visualized without any another server.



Blinds



Jalousie



Scene



Switching



Dimming



RGB Control



Energy
Display



Audio



Air Quality



Tunable
White



RTC Control

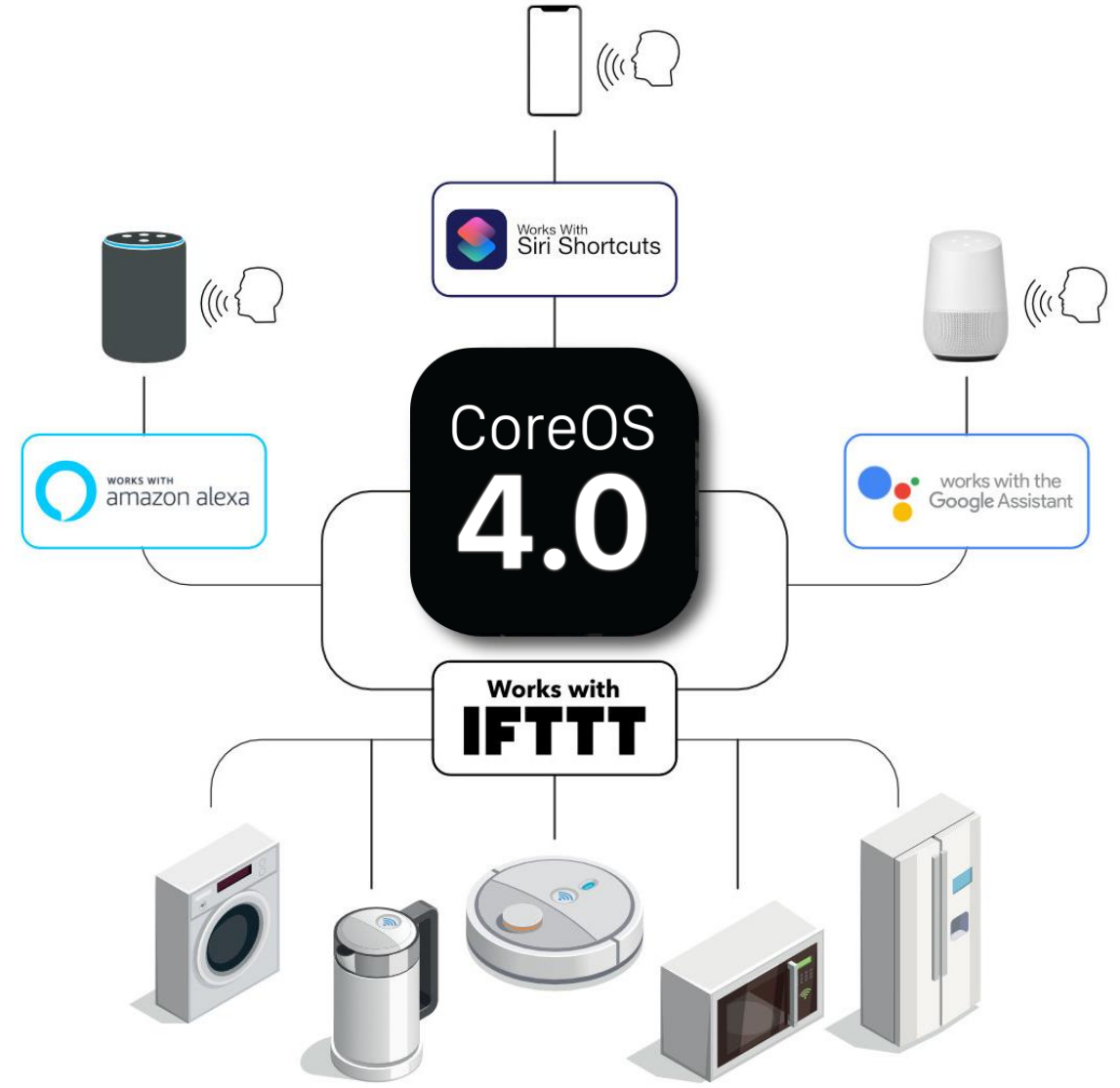


AC Control



A True Gateway to IoT World

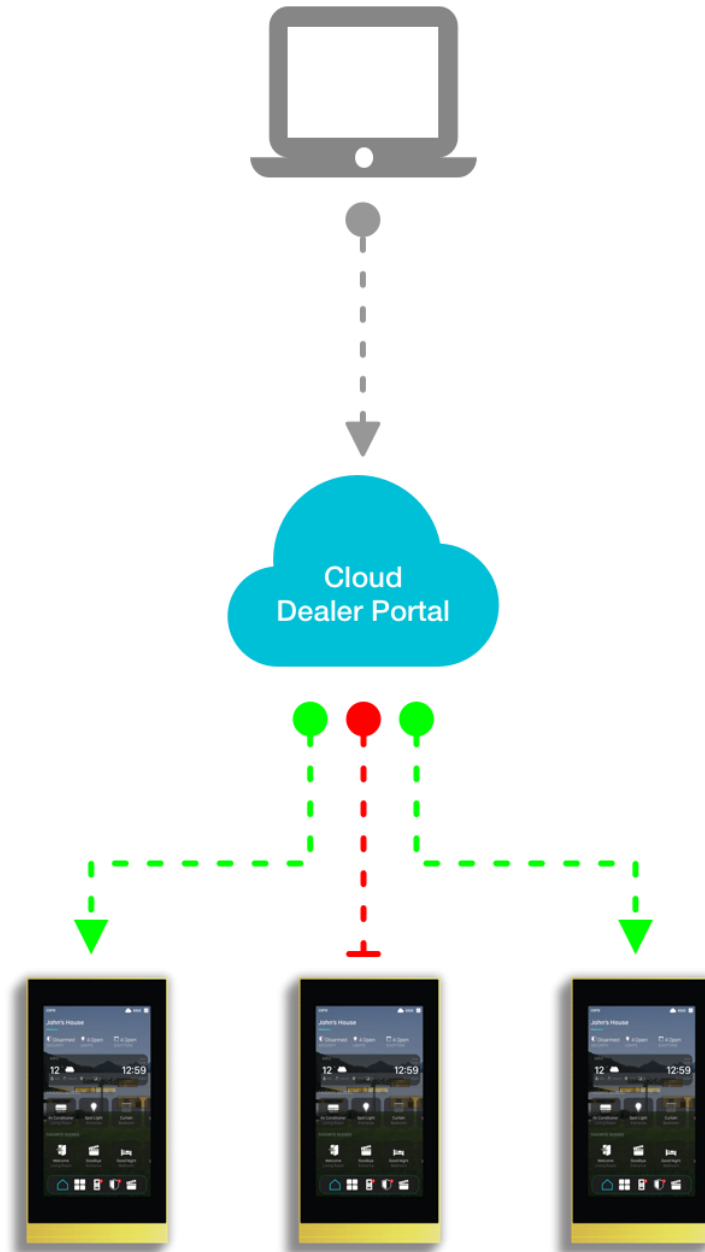
Core Home Controller Touch Panels in combination with Core Cloud enables integration of the home automation system with smart devices via voice commands



Configuration Simplified

With the integrator friendly Cloud Dealer Portal, the system can be programmed online simultaneously or offline later. It is possible to create schemes for typical flats in large scale residential projects and assign these to Touch Panels. Thus provides flexibility and cost reduction during Commissioning.

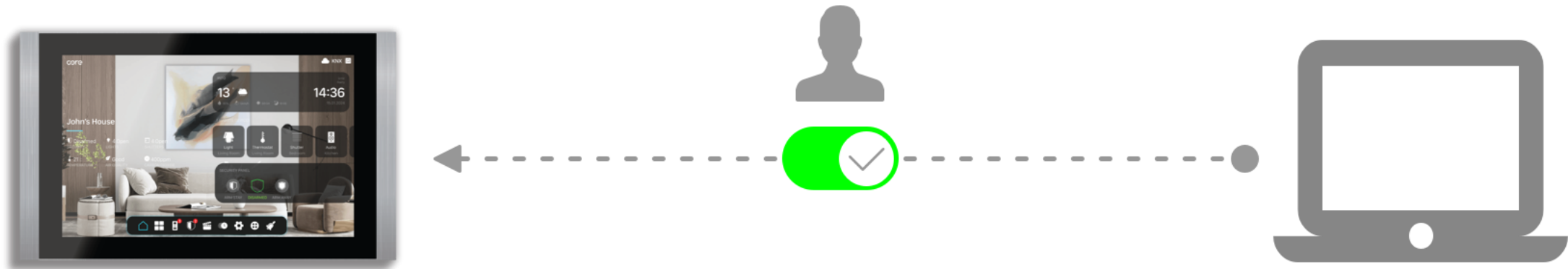
- ▶ Auto-assigned Touch Panels for Integrator
- ▶ Configuration flexibility for both online and offline Touch Panels
- ▶ Flat Schemes for large scale residential projects
- ▶ User Role Management for Integrator Staff



Authorized Remote Service

Only Authorized Integrator can access to the system with the permission of the User; thanks to Cloud Dealer Portal. Authorized Remote Service reduces cost and time to reconfigure, update and bug-fixes of the system without compromising privacy of the User.

- ▶ Online re-configuration, update and bug-fixes
- ▶ Permission mechanism for privacy of the User
- ▶ Access Management to the Touch Panels for Integrator Staff



Core Mobile

Core Touch Panels are gateway for remote connection.

Thanks to Core Cloud, communication between Core Mobile app and Core Touch Panel takes place safely via an encrypted connection in accordance with the latest security standards.



Call on Mobile

With Core Mobile App don't miss your visitors or packages any more. Respond to visitors at your door immediately via Core Mobile App, whether you are at home or on the other side of the world.





Designed for Exclusive Living Spaces

www.core.com.tr

info@core.com.tr

